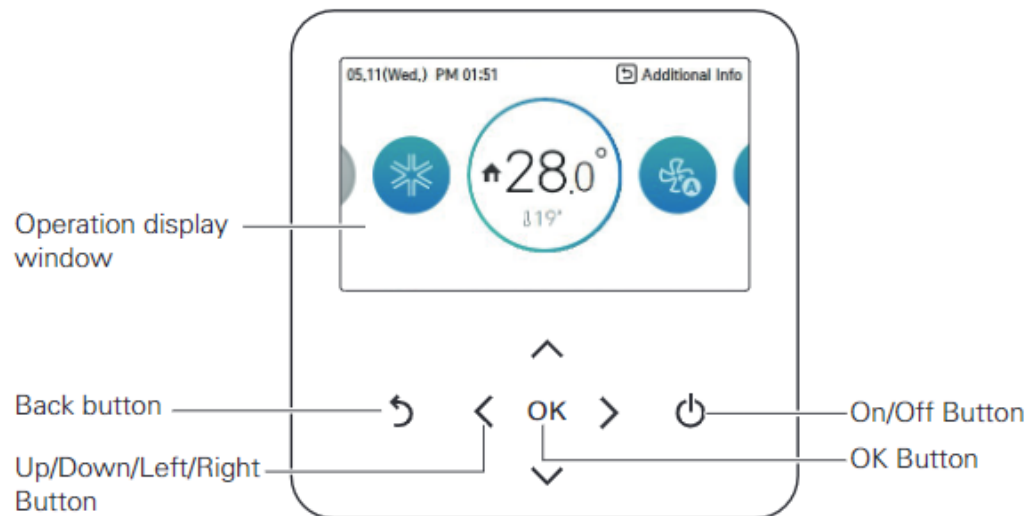


LG PREMTB100

NEW STANDARD REMOTE CONTROLLER



Operation display window	Operation and Settings status display
Back button	When you move to the previous stage from the menu's setting stage
Up/Down/Left/Right Button	When you change the menu's setting value
OK button	When you save the menu's setting value
On/Off button	When you turn ON/OFF the air conditioner

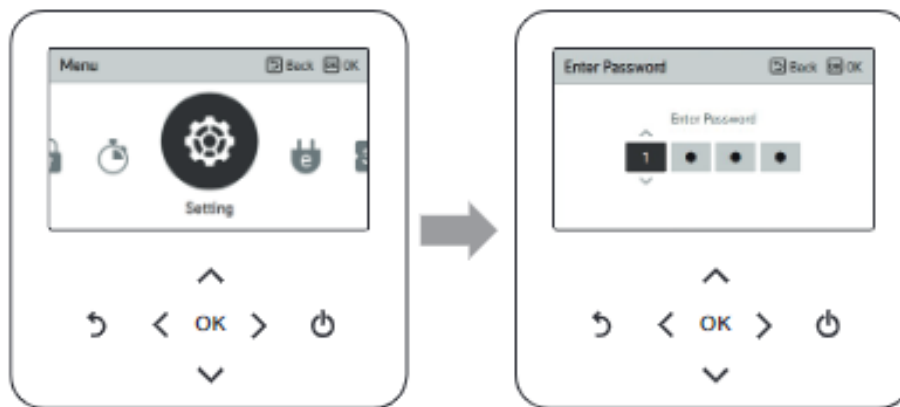
INSTALLER SETTING

How to enter installer setting

⚠ CAUTION

The installer setting mode is the mode to set the remote controller's detail function. If the installer setting mode is incorrectly set, it may cause product failure, user's injury, or property damage. It must be set by the installation specialist with the installation license, and if it is installed or changed without installation license, all problems caused will be the responsibility of the installer, and may void the LG warranty.

- In the menu screen, press [←,→(left/right)] button to select the setting category, and press [▲(up)] button for 3 seconds to enter the password input screen for the installer setting.
- Input the password and press [OK] button to move to the installer setting list.



※ Installer setting password

Main screen → menu → setting → service → RMC version information → SW Version

Example) SW version : 1.00.1 a

In the above case, the password is 1001.

ⓘ NOTE

Some categories of the installer setting menu may not be available depending on the product function or the menu name may be different.



Temperature sensor(2TH) setting (air conditioner / DX ventilator)

It is the function to select the temperature sensor to decide the indoor temperature.

- You can set the following setting values using [←,→(left/right)] button.

Installer	Back	OK
Test Run		>
Central Control Address		>
ESP		>
Temperature Sensor(2TH)	<	2TH >
Ceiling Height Selection		< Low >

Temperature sensor location	Description	
Remote controller	Operate the system with wired remote controller's temperature sensor	
Indoor Unit	Operate the system with indoor unit's temperature sensor	
2TH	Cool	Compare the temperatures of the indoor unit and the wired remote controller and operate with the higher temperature (There are system operated with lower temperature)
	Heat	Compare the temperatures of the indoor unit and the wired remote controller and operate with the lower temperature

- 2TH function's operation characteristics may be different for each product.

Using 'RMC' is recommended unless the thermostat is located in a less than ideal location. Using 'RMC' usually gives the highest level of comfort and efficiency.

***NOTE: it is NOT recommended to use '2TH' – this is not an averaging setting, in this setting it will use the lowest value in heating and the highest value in cooling which can create comfort issues.

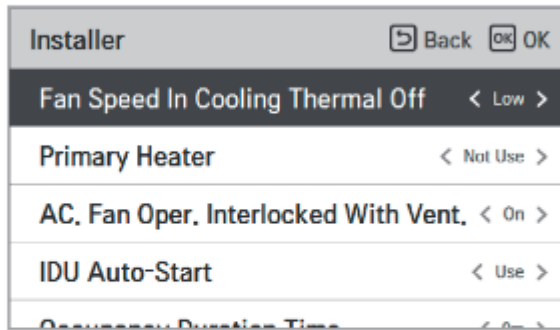
Over Heating set to '3' this is a -2°/+2°F thermal heating on/off



Fan speed in Cooling thermal off (air conditioner)

Indoor unit fan, in cooling mode, during thermal off condition.

- Select value using [<,>(left/right)] button.



	Value
Low	Fan speed low
Off	Fan off
Setting	fan speed setting value

Low fan speed is recommended to properly dry the coil and pull all of the energy out of the system. If the noise of the fan is an issue, 'Off' can be selected to turn the fan off and the end of a cooling call.